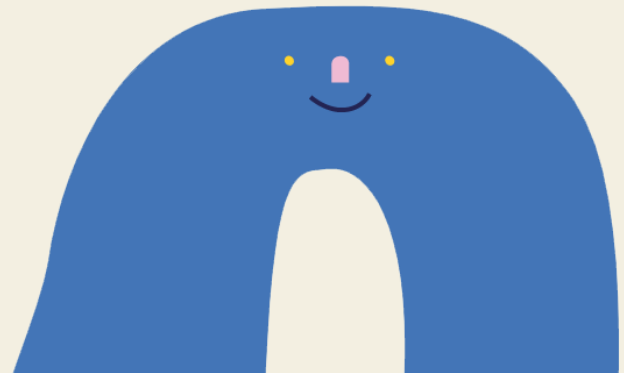


# CLEAN UP ACTIVITY SHEET

Presented by Colorado River Alliance



COLORADO RIVER ALLIANCE





# INTRODUCTION

**The Colorado River** is a 862 mile- long river that flows through Texas and empties into the Gulf of Mexico. The river runs directly through Austin and makes up all of Austin's lakes, including Lady Bird Lake. Did you know that as Austin residents, we get 100% of our water from the Colorado River? That's right, the City of Austin pumps its drinking water from the Colorado River!





**That is one big reason we need to keep it clean, but we aren't the only ones who need clean water to live.**

Other animals and plants depend on the river to live. From fish to salamanders, to the Black Willow tree and birds like the Blue Herron, we all need a clean river!

### **So, how does the river get dirty?**

Not only can the river get polluted by trash being thrown directly in the water, but rain washes trash from other places into Austin's creeks that flow into the Colorado River. That's why it's important to always pick up after ourselves and sometimes after others who have forgotten!





# Let's Clean Up Our Act!

Litter is ugly, dangerous, and...

- it's poisonous to animals
- animals get tangled in litter
- it blocks ditches which can lead to flooding
- toxic chemicals from litter pollute the air and water



## CLEAN THE SCENE

It's time to clean up! Gear up with gloves and a garbage bag and start your mission! See what types of litter you find! Keep a tally on the right, then recycle or throw away what you find!

When you are done, use the space below to explain where you think the litter may have come from.

---

---

---

---

---

---

---

| TYPE:           | NUMBER FOUND: |
|-----------------|---------------|
| Plastic Bottles | _____         |
| Glass           | _____         |
| Bottle Caps     | _____         |
| Paper           | _____         |
| Food Wrappers   | _____         |
| Cans            | _____         |
| Styrofoam       | _____         |
| Cardboard       | _____         |
| Cigarette Butts | _____         |
| Other           | _____         |

# What's in the Water?

It's your turn to be a scientist! What is the quality of the water near you? It doesn't take long, but taking a closer look will give you a better idea of what is wallowing in your water!

Name of Water Source \_\_\_\_\_

Date \_\_\_\_\_



## CLARITY:

- Crystal clear
- Cloudy like lemonade
- Looks like tea
- As dark as rootbeer

## LITTER:

- Picture perfect
- Time to clean
- Looks like a landfill

## ODOR:

- Summer breeze
- What smell?
- Sweaty socks
- Rotten eggs

## WATER FLOW:

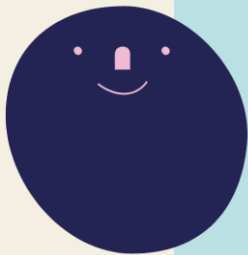
- What water?
- Totally a trickle
- Steady on the move
- Catch me if you can

## WATER LIFE:

- Fish
- Turtles
- Algae
- Bugs
- Plants
- Other \_\_\_\_\_

## FINAL QUALITY RATING:

- Give me a drink
- I'd swim in there
- I've seen cleaner
- Grime central



Was there anything out of the ordinary that you discovered? What do you think contributed to the quality of this water? \_\_\_\_\_

\_\_\_\_\_

